



EST 1850

*Dalman & Narborough*

---

*Glen Esk*<sup>TM</sup>

TRADITIONAL & CONTEMPORARY  
HIGHLAND WEAR





TRADITIONAL & CONTEMPORARY  
HIGHLAND WEAR

Index

Trews, Kilt, Utility & Trouser Belts .....	1-5
Kilt Buckles .....	6-10
Piper & Plaid Brooches.....	11-14
Boys Range.....	15
Kilt Pins .....	16-17
The Irish Range.....	18-19
The Masonic Range .....	20-21
Fire Department Range.....	22-24
Sgian Dubhs .....	25-29
Dirks .....	30-31
Sgian Brews .....	32
Straps & Buckles .....	33
Sporran Chains & Straps .....	34-35
Cufflinks.....	36
Water Bottle Holder .....	37
Utility Pouches .....	37
Pipers Belts & Buckle.....	38
Cross Belts.....	39
Drum Major Staff & Finials .....	40
Size Charts.....	41

[www.glen-esk.com](http://www.glen-esk.com)

## TREWS BELTS & KILT BELTS



**Grained Hide Trews Belt** GMB006



**Grained Hide Kilt Belt** GMB005



**Grained Hide Velcro Kilt Belt** GMB001



**Grained Kilt Belt Brown** GMB001/BRN



**Celtic Knot Hide Embossed Kilt Belt** GMB013



**Celtic Knot Hide Embossed Kilt Belt Brown** GMB013/BRN

## KILT BELTS



**Celtic Stag Hide Embossed Kilt Belt** GMB014



**Celtic Stag Hide Embossed Kilt Belt Brown** GMB014/BRN



**Celtic Swirl Hide Embossed Kilt Belt** GMB015



**Celtic Swirl Hide Embossed Kilt Belt Brown** GMB015/BRN

## KILT BELTS



**Celtic Thistle Hide Embossed Kilt Belt** GMB016



**Celtic Thistle Hide Embossed Kilt Belt Brown** GMB016/BRN



**Celtic Serpent Hide Embossed Kilt Belt** GMB017



**Celtic Serpent Hide Embossed Kilt Belt Brown** GMB017/BBRN



**Plain Hide Kilt Belt** GMB010



**Plain Hide Kilt Belt Brown** GMB010/BRN



**Plain Hide Velcro Kilt Belt** GMB011



**Lined Grained Hide Kilt Belt** GMB012



**Lined Celtic Knot Hide Embossed Kilt Belt**  
**Knot** GMB024, **Thistle** GMB027, **Serpent** GMB028



**Celtic Knot Hide Embossed Velcro Kilt Belt**  
**Knot** GMB019, **Stag** GMB020, **Swirl** GMB021, **Thistle** GMB022, **Serpent** GMB023

## UTILITY BELTS



**2" 2 Prong Roller Knot Embossed Utility Belt with Snaps** GMB033/PSB (S - 2XL)



**2" 2 Prong Roller Thistle Embossed Utility Belt with Snaps** GMB037/PSB (S - 2XL)

## TROUSER BELTS & BUCKLES



**1 1/2" Celtic Knot Hide Embossed Trouser Belt with buckle**

GMT003



**1 1/2" Celtic Thistle Hide Embossed Trouser Belt with buckle**

GMT006



**1 1/2" Celtic Knot Hide Embossed Trouser Belt with snap fittings and buckle**

GMT008



**1 1/2" Celtic Thistle Hide Embossed Trouser Belt with snap fittings and buckle**

GMT012



**1 1/2" Triskel Snap Buckle**

GMBS001



**1 1/2" Neverending Knot Snap Buckle**

GMBS002



**1 1/2" Rectangular Snap Buckle**

GMBS003



**1 1/2" Oval Knotwork Snap Buckle**

GMBS004

## KILT BUCKLES



**Highland Swirl (Chrome Finish)**  
GMB03/CP



**Highland Swirl (Antique Silver Finish)**  
GMB03/AS



**Highland Serpent (Chrome Finish)**  
GMB09/CP



**Highland Serpent (Antique Silver Finish)**  
GMB09/AS



## KILT BUCKLES



**Highland Saltire  
(Chrome Finish)**

GMB20/CP



**Highland Saltire  
(Antique Silver Finish)**

GMB20/AS



**Highland Saltire Blue  
(Chrome Finish)**

GMB20/CP/BLUE



**Highland Saltire Blue  
(Antique Silver Finish)**

GMB20/AS /BLUE



**Highland Saltire Black  
(Chrome Finish)**

GMB20/CP/BLACK



**Highland Saltire Black  
(Antique Silver Finish)**

GMB20/AS/BLACK

## KILT BUCKLES



**Traditional Lion  
(Chrome Finish)**

66/CP/LION



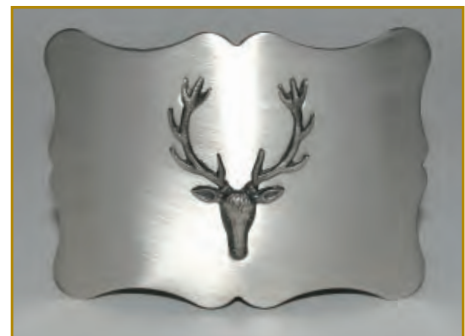
**Traditional Lion  
(Antique Silver Finish)**

66/AS/LION



**Traditional Stag  
(Chrome Finish)**

66/CP/STAG



**Traditional Stag  
(Antique Silver Finish)**

66/AS/STAG



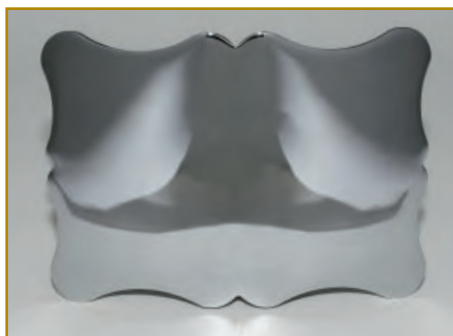
**Traditional Thistle  
(Chrome Finish)**

66/CP/THIS



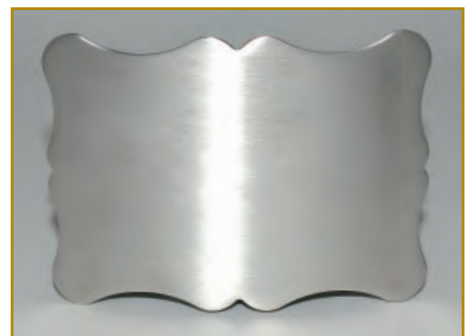
**Traditional Thistle  
(Antique Silver Finish)**

66/AS/THIS



**Traditional  
(Chrome Finish)**

66/CP



**Traditional  
(Antique Silver Finish)**

66/AS

## KILT BUCKLES



**Celtic Knot & Lion Mount  
 (Chrome Finish)**

87/CP/LION



**Celtic Knot & Lion Mount  
 (Antique Silver Finish)**

87/AS/LION



**Celtic Knot & Stag Mount  
 (Chrome Finish)**

87/CP/STAG



**Celtic Knot & Stag Mount  
 (Antique Silver Finish)**

87/AS/STAG



**Celtic Knot & Thistle Mount  
 (Chrome Finish)**

87/CP/THIS



**Celtic Knot & Thistle Mount  
 (Antique Silver Finish)**

87/AS/THIS



**Celtic Knot  
 (Chrome Finish)**

87/CP



**Celtic Knot  
 (Antique Silver Finish)**

87/AS



**Celtic Knot  
 (Chocolate Bronze Finish)**

87/CB

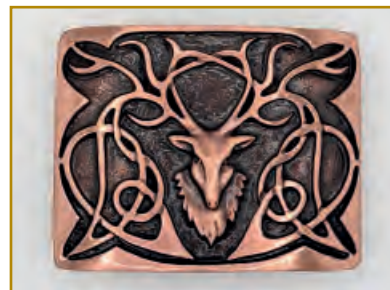
**PEWTER KILT BUCKLES**



**Pewter Stag  
 (Polished Finish)**  
 GMB26P



**Pewter Stag  
 (Matt Finish)**  
 GMB26M



**Pewter Stag  
 (Chocolate Bronze Finish)**  
 GMB26CB



**Pewter Coo  
 (Polished Finish)**  
 GMB32P



**Pewter Coo  
 (Matt Finish)**  
 GMB32M



**Pewter Coo  
 (Chocolate Bronze Finish)**  
 GMB32CB



**Pewter Zoomorphic  
 (Polished Finish)**  
 385/ZOO/BRIGHT



**Pewter Zoomorphic  
 (Matt Finish)**  
 385/ZOO/MATT

## PLAID BROOCHES



**Classic Plaid  
(Chrome Finish)**

GMP01/CP



**Classic Plaid  
(Antique Silver Finish)**

GMP01/AS



**Celtic Ropework Plaid  
(Polished Finish)**

GMP10/BRIGHT



**Celtic Ropework Plaid  
(Matt Finish)**

GMP10/MATT

## PLAID BROOCHES



**Celtic Plaid  
(Chrome Finish)**  
GMP15/BRIGHT



**Coo Plaid  
(Chrome Finish)**  
GMP20/BRIGHT



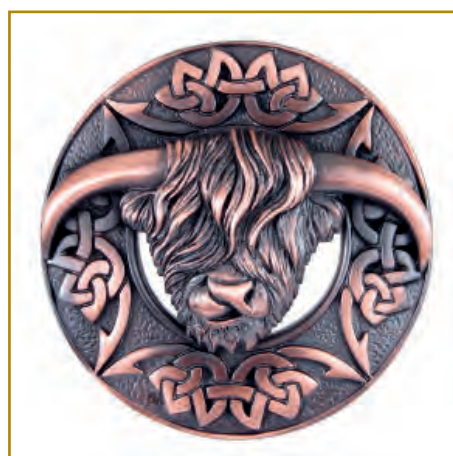
**Celtic Plaid  
(Antique Silver Finish)**  
GMP15/MATT



**Coo Plaid  
(Antique Silver Finish)**  
GMP20/MATT



**Celtic Plaid  
(Chocolate Bronze Finish)**  
GMP15/CB



**Coo Plaid  
(Chocolate Bronze Finish)**  
GMP20/CB

## PLAID BROOCHES



**Thistle Plaid with Lion Mount  
(Chrome Finish)**

GMP39/LION/CP



**Thistle Plaid with Lion Mount  
(Antique Silver Finish)**

GMP39/LION/AS



**Thistle Plaid with Stag Mount  
(Chrome Finish)**

GMP39/STAG/CP



**Thistle Plaid with Stag Mount  
(Antique Silver Finish)**

GMP39/STAG/AS



**Thistle Plaid with Thistle Mount  
(Chrome Finish)**

GMP39/THIS/CP



**Thistle Plaid with Thistle Mount  
(Antique Silver Finish)**

GMP39/THIS/AS

## PLAID BROOCHES



**Thistle Plaid with Emerald Stone  
(Chrome Finish)**  
GMP41/CP EMERALD



**Thistle Plaid with Emerald Stone  
(Chrome Finish)**  
GMP38/CP EMERALD



**Thistle Plaid with Sapphire Stone  
(Chrome Finish)**  
GMP41/CP SAPPHIRE



**Thistle Plaid with Sapphire Stone  
(Chrome Finish)**  
GMP38/CP SAPPHIRE



**Thistle Plaid with Amethyst Stone  
(Chrome Finish)**  
GMP41/CP AMETHYST



**Thistle Plaid with Amethyst Stone  
(Chrome Finish)**  
GMP38/CP AMETHYST



**Thistle Plaid with Topaz Stone  
(Chrome Finish)**  
GMP41/CP TOPAZ



**Thistle Plaid with Topaz Stone  
(Chrome Finish)**  
GMP38/CP TOPAZ



## BOYS RANGE



**Boys Sporran Chain**

GMBOY002



**Boys One Size Velcro Belt**

GMBOY001



**Boys Celtic Knot Buckle  
(Chrome Finish)**

87B/CP



**Boys Celtic Knot Buckle  
(Antique Finish)**

87B/AS

## KILT PINS



GMKILT01/AS



GMKILT01/CP

**Thistle Kilt Pin**  
 (Antique & Chrome Finish)



GMKILT02/AS



GMKILT02/CP

**Celtic Kilt Pin**  
 (Antique & Chrome Finish)



GMKILT06/AS



GMKILT06/CP

**Highland Thistle Pin**  
 (Antique & Chrome Finish)



GMKILT08/AS



GMKILT08/CP

**Lion Rampant Kilt Pin**  
 (Antique & Chrome Finish)



PEW/COO/BRIGHT



PEW/COO/MATT



PEW/COO/CB

**Pewter Coo Kilt Pin**  
 (Polished Chrome, Antique & Chocolate Bronze Finish)

## KILT PINS



**Highland Stag Kilt Pin**  
 (Antique Finish)

GMKILT18/MATT



**Modern Claymore Kilt Pin**  
 (Antique & Chrome Finish)

MCKP01/AS



MCKP01/CP



**Pewter Stag**  
 PEW/STAG/MATT



**Pewter Stag**  
 PEW/STAG/CB



**Horn Kilt Pin** GMKH



**Horn Kilt Pin**  
 (with Chrome cap) GMKHC



**Horn Kilt Pin**  
 (with Buffalo cap) GMKHB



*Please note that GMKH, GMKHC & GMKHB are genuine horn kilt pins and may differ in appearance from images shown.*



**Masonic Kilt Pin**  
 (Chrome Blue)  
 GMKILT01/CM



**Saltire Kilt Pin**  
 (Antique Finish)  
 GMKILT15/MATT



**Pewter Kilt Pin**  
 (Gilt Plate Dragon Crest  
 - Chrome Plate)  
 GMKILT30/BRIGHT

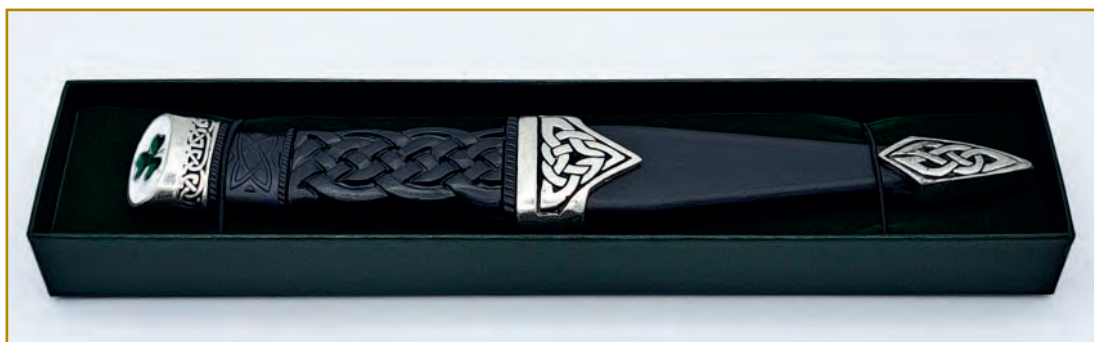
## THE IRISH RANGE



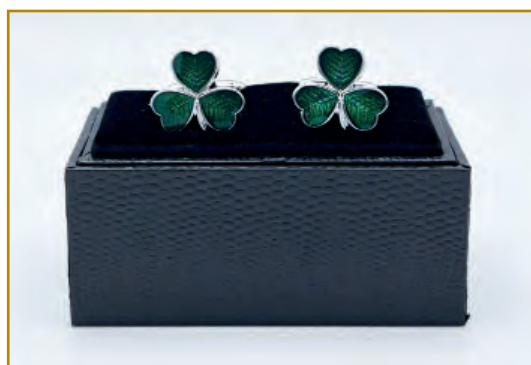
**Claddagh Sgian Dubh Antique** GMSD09



**Claddagh  
Kilt Pin Antique**  
GMKILT19/MATT



**Shamrock Dress Sgian Dubh** GMSD06



**Shamrock Enamelled Cufflinks** GMCF28



**Shamrock  
Kilt Pin Chrome**  
PEW/SHAM/CP

## THE IRISH RANGE



**Shamrock 65 Pattern Buckle  
(Chrome Finish)**

65/CP



**Shamrock 65 Pattern Buckle  
(Antique Silver Finish)**

65/AS



**Claddagh Waist Plate  
(Chrome Finish)**

GMB27/CP



**Claddagh Waist Plate  
(Antique Finish)**

GMB27/AS



**Shamrock Plaid Brooch  
(Chrome Finish)**

GMP34/CP



**Shamrock Plaid Brooch  
(Antique Finish)**

GMP34/AS

## THE MASONIC RANGE



**Masonic Hide Embossed Velcro Kilt Belt** MAS05



**1 1/2" Masonic Hide Embossed Trouser Belt** MAS03

## THE MASONIC RANGE



**Masonic Celtic Knot Buckle  
(Chrome Finish)**

87/CP/MASONIC



**Traditional Masonic Buckle  
(Chrome Finish)**

66/CP/MASONIC



**Masonic Plaid Brooch  
(Chrome Finish)**

GMP39/MASON/CP



**Masonic Kilt Pins**

**(Chrome Blue)** GMKILT01/CM



**Masonic Sgian Dubh  
(Chrome Blue)** GMSD03C

## FIRE DEPARTMENT RANGE



**Buckle (Chrome Finish)**

66/CP/FIRE



**Buckle (Antique Silver Finish)**

66/AS/FIRE



**Buckle (Chrome/Gilt Finish)**

66/CP/FIREGP



**Buckle (Chrome/Red Finish)**

66/CP/FIRERED



**Buckle (Chrome/Red/Gilt Finish)**

66/CP/FIREGPRED



**Chrome**

**Fire  
Department  
Mounts**



**Antique**



**Chrome/Red**



**Gilt**



**Gilt Red**



## FIRE DEPARTMENT RANGE



**Plaid Brooch  
(Gilt Finish)**

FIREP01GP



**Plaid Brooch  
(Antique Finish)**

FIREP01M



**Plaid Brooch  
(Chrome/Red Finish)**

FIREP01E/CP



**Plaid Brooch  
(Chrome Finish)**

FIREP01/CP



**Plaid Brooch  
(Gilt/Red Finish)**

FIREP01EGP



**Kilt Pin** FIREKP01/CP  
(Chrome Finish)



**Kilt Pin** FIREKP01/AS  
(Matt Finish)



**Kilt Pin** FIREKP01/GP  
(Gilt Finish)

## FIRE DEPARTMENT RANGE



**Fire Department Hide Embossed Velcro Kilt Belt** FIREKB02



**Sgian Dubh (Chrome Finish)** GMSD10



## DRESS SGIAN DUBHS



**Dress Sgian Dubh Pip Top (Chrome Finish)** GMSD03BRIGHT



**Dress Sgian Dubh Pip Top (Antique Finish)** GMSD03MATT



**Dress Sgian Dubh Saltire Top (Chrome Blue)** GMSD07/BBLUE



**Dress Sgian Dubh Saltire Top (Chrome Black)** GMSD07/BLACK

## DRESS SGIAN DUBHS

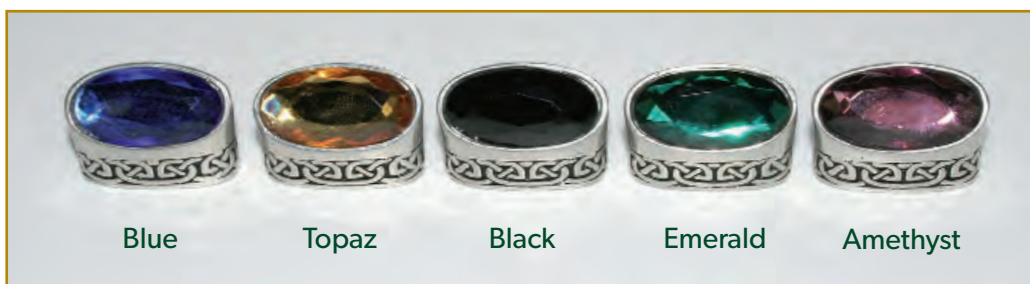


**Dress Sgian Dubh Stone Top (Chrome Finish) GMSD01**



**Dress Sgian Dubh Stone Top (Antique Finish) GMSD01**

the above Dress Sgian Dubh's  
 are available with the following coloured stones



## GENUINE HORN SGIAN DUBHS



**G1 Quirky Horn Sgian Dubh**



**G1 Plain Horn Sgian Dubh**



**G2 Cap Horn Sgian Dubh**

*All horn products are a natural material and may differ in appearance from images shown.*

## GENUINE HORN SGIAN DUBHS



**G3 Half Crown Horn Sgian Dubh**



**G7 Horn Sgian Dubh with Black Buffalo Horn Cap**



**G6 Damascus Steel Horn Sgian Dubh (Full Crown)**



**G8 Damascus Steel  
Horn Sgian Dubh (Half Crown)**

*All horn products are a natural material and may differ in appearance from images shown.*

## MILITARY PATTERN SGIAN DUBHS



**Sgian Dubh & Scabbard  
Scottish Regiment - Pipers**

8465-99-973-6671



**Sgian Dubh & Scabbard  
Scottish Regiment - Pipers - Topaz Stone Top Mount**

8465-99-973-6671STONE

## GENUINE HORN DIRKS



**Carbon Steel Horn Handle Dirk**

Dirk01



**Damascus Steel Horn Handle Dirk**

Dirk02

(available with black or brown scabbard)

*All horn products are a natural material and may differ in appearance from images shown.*



## MILITARY PATTERN DIRKS



**Scottish Regiments  
Pipers Dirk and Scabbard**

8465-99-136-7275



**Scots Guards  
Pipers Dirk and Scabbard**

465-99-973-6901

## SGIAN BREWS



**Horn Sgian Brew (Safety Sgian Dubh)**

SGB1



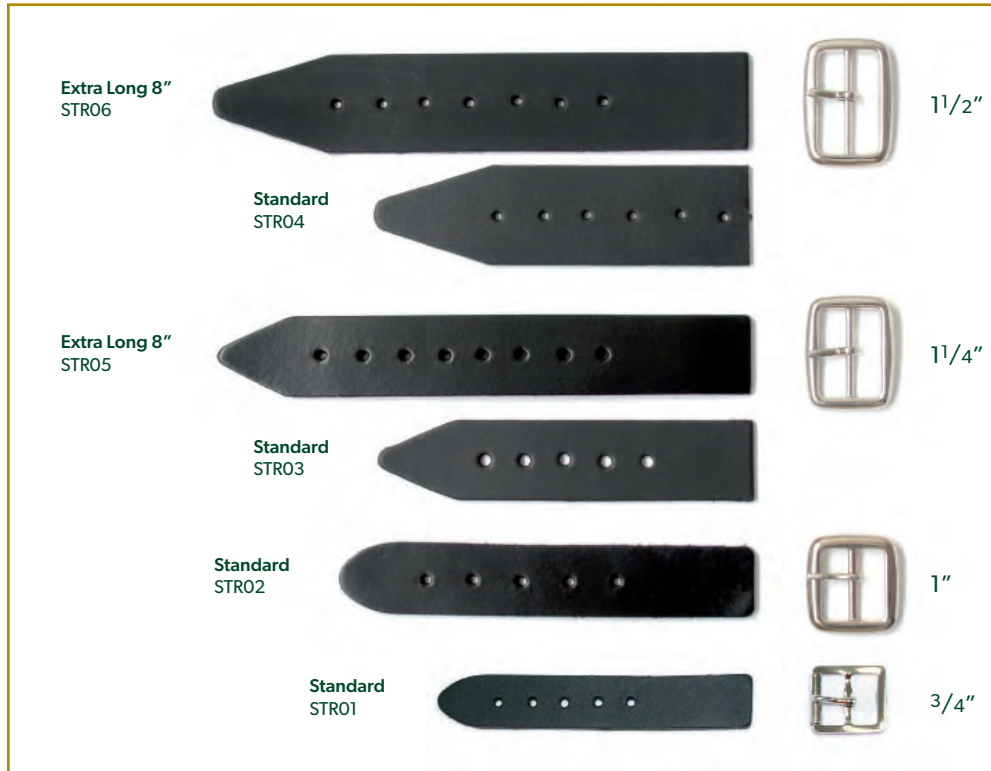
**Dress Sgian Brew (Safety Sgian Dubh)**

GMSB01

*Supplied without Boxes.*

## SIDE STRAPS & BUCKLES & EXTENSION STRAPS

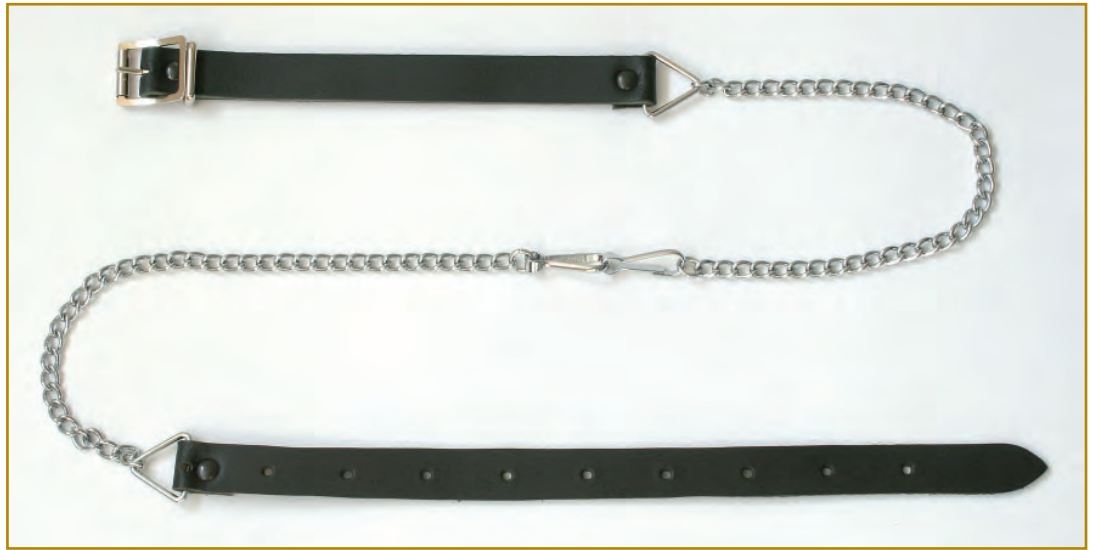
### Side Straps & Buckles



### Extension Straps



## SPORRAN CHAINS



**Sporran Chain**



**Sporran Chain (Chrome) GMC001 & (Antique Finish) GMC002**



**Fancy Square Sporran Chain (Chrome) GMC006 & (Antique Finish) GMC007**

**All of the above available in brown leather**

## SPORRAN STRAPS & SPORRAN SUSPENDERS



**Black Leather Sporrans Strap**

GMC011



**Brown Leather Sporrans Strap**

GMC012



**Sporrans Suspender (Link - Black Leather)**

GMC013



**Sporrans Suspender (Plain - Black Leather)**

GMC015



**Sporrans Suspender (Link - Black Leather)**

GMC014



**Sporrans Suspender (Plain - Brown Leather)**

GMC016

## CUFFLINKS



**Saltire Cuff Links** CUFSCOT



**Charlie Cuff Links**  
**(Chrome Finish)** GMCF30/CP



**Charlie Cuff Links**  
**(Antique Finish)** GMCF30/AS



**Enamelled Cufflinks** GMCF28

## WATER HOLDER



**Leather Bottle Holder - Black** GMLBH01

## UTILITY POUCHES



**Standard Plain Utility Pouch**

GMSP01



**Standard Large Utility Pouch**

GMSP02



**Standard Embossed Utility Pouch**

GMSP03



**Standard Large Embossed Utility Pouch**

GMSP04

## PIPERS WAIST BELTS



**2 1/2" Hide Pipers Waist Belt**

GMB050

## PIPERS BUCKLE



**74 Pipers Buckle (2 1/2" belt fitting)**

74/CP



## CROSS BELTS



**Drummers Hide Cross Belt with chrome thistle mounts** GMB70



**Pipers Hide Cross Belt with chrome thistle mounts** GMB60



## DRUM MAJOR'S STAFFS

The Drum Major's Staff was introduced into the British Army in the 18th century. The staff is not simply a designation of authority but is used by defined drill movements to signal commands to the Band. Drum Majors' Staffs are made to order. It is customary for the regimental Staff to carry the Regimental or Unit title, Badge, Devices and on occasions Battle Honours, inscribed around the head. The Staff is fashioned from base metal or Sterling Silver, finished in silver plate or gold gilt. Best quality real Malacca canes are fitted. The average length overall of a Staff is 58 inches.



### Example Finials



## SIZE CHARTS

### TRADITIONAL KILT BELTS

Available in waist sizes 30" to 56"

### VELCRO KILT BELTS

SMALL	To fit waist	27" - 37"
MEDIUM	To fit waist	28" - 40"
LARGE	To fit waist	30" - 43"
X-LARGE	To fit waist	34" - 45"
2X-LARGE	To fit waist	37" - 50"
3X-LARGE	To fit waist	43" - 57"

### UTILITY BELTS

SMALL	To fit waist	29" - 37"
MEDIUM	To fit waist	33" - 41"
LARGE	To fit waist	37" - 45"
X-LARGE	To fit waist	42" - 49"
2X-LARGE	To fit waist	45" - 52"
3X-LARGE	To fit waist	48" - 56"

### TROUSER BELTS

SMALL	To fit waist	31" - 36"
MEDIUM	To fit waist	35" - 40"
LARGE	To fit waist	39" - 44"
X-LARGE	To fit waist	43" - 47"
2X-LARGE	To fit waist	48" - 52"
3X-LARGE	To fit waist	51" - 56"

### SPORRAN CHAINS

SMALL	To fit waist	32" - 36" with 5 adjustment holes
MEDIUM	To fit waist	32" - 42" with 9 adjustment holes
LARGE	To fit waist	34" - 46" with 10 adjustment holes
X-LARGE	To fit waist	42" - 51" with 10 adjustment holes
2X-LARGE	To fit waist	48" - 58" with 10 adjustment holes
3X-LARGE	To fit waist	56" - 64" with 10 adjustment holes



**ALL ARMS MARKETING AND  
MANUFACTURING ORGANISATION**  
AMMO & COMPANY LIMITED

Unit 17, Gravelly Industrial Park, Birmingham B24 8HZ

Tel: +44 (0)121 772 2999 • Email: [info@glen-esk.com](mailto:info@glen-esk.com) • Web: [www.ammoandco.co.uk](http://www.ammoandco.co.uk)

**AMMO GROUP DIVISIONS**



EST 1850

**AMMO & COMPANY**  
**REGIMENTS DIRECT**



EST 1850

*Dalman & Narborough*  
**Glen Esk™**



Proud recipients of  
The King's Award for Enterprise 2023